

# Elite 2500/3250/4000 Fixed Frame



## STANDARD FEATURES

- Architectural Grade Performance - AW-100 rating
- Thermally broken frame using strut technology
- Frame factory sealed to ensure weather tightness
- Bead glazed for ease of replacement glass
- 1 inch insulated glass, IGCC-CBA rated, tested, and approved

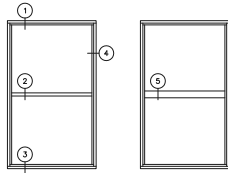
## OPTIONS

- Available muntins include: true divided lites, between-the-glass, interior and exterior applied
- 1/4" single glazing up to 1 3/8" insulated glazing
- Impact Wind Zone 4, Level D - ASTM E 1886/1996, DP +70/-70 (48 X 72) in 3 1/4" frame depth
- Integral frame front flange
- Mullion and stacking options
- Receptor, subsill and panning closure systems

## ACCESSORIES

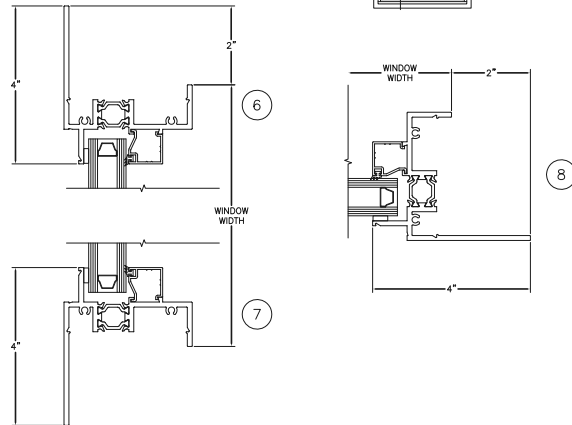
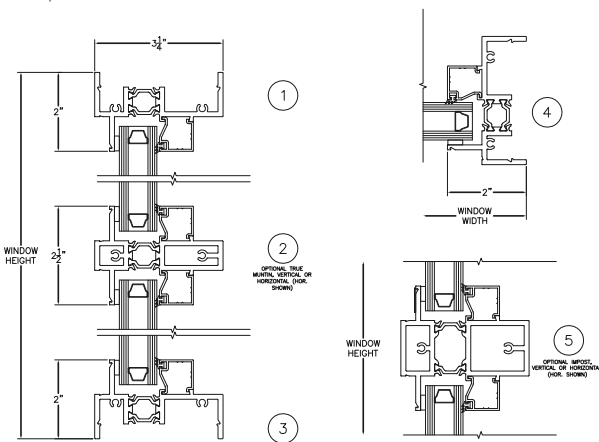
- Head & Jamb Closures (Strut), Subsills (Strut), Vertical Mullions, Exterior Applied Grids, Head & Jamb Closure Extenders, Interior Trim & Clip, Panning Trim, Stool Covers, Subsill Extenders

# Elite 2500/3250/4000 Fixed Frame



**EQ LEG FRAME**

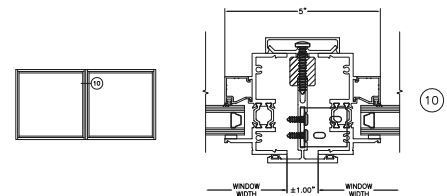
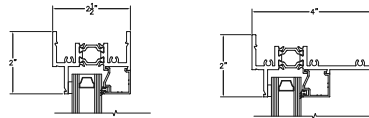
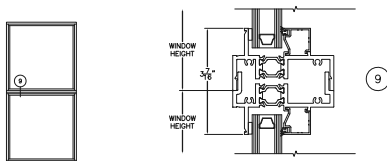
**FRONT FLANGE FRAME**



**STACK DETAIL**

**2-1/2" & 4" FRAME DEPTHS AVAILABLE**

**MULL DETAIL**



## PERFORMANCE

AAMA/WDMA/CSA 101/I.S.2/A440-08

AW-PG100-FW – 60" X 99"

Large Missile Impact: Wind Zone 4: ASTM E 1886/1996

DP 70 PSF – 48" X 72" (3 1/4" frame depth)

Air Infiltration: < .10 CFM/SQ.FT. @ 6.24 PSF per ASTM E293

Water Resistance: 12 PSF per ASTM E 547 & 331

Uniform Deflection: AW100 - 100 PSF per ASTM E330

Uniform Structural: AW100 - 150 PSF per ASTM E330

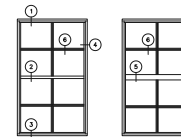
Thermal Performance: 1" Insulated Glass (NFRC 100/200)

Low-E U-factor = 0.37

Low-E & argon U-factor = 0.33

Thermal Performance: 1" Insulated Glass per AAMA 1503

Low-E & argon U-factor = 0.33; CRF = 69



**HISTORIC GRID OPTIONS**

