

Elite 4000 Fixed Offset Window



STANDARD FEATURES

- Elite 4000 Offset Fixed Frame (4" Frame Depth)
- Architectural Grade Performance with AW-80 / AW-120 ratings
- 1" insulated glass, IGCC-CBA rated, tested, and approved
- Thermally broken frame using strut technology
- Frame factory sealed to ensure weather tightness
- Bead glazed for ease of glass replacement
- Integral frame offset impost to simulate operable hung window

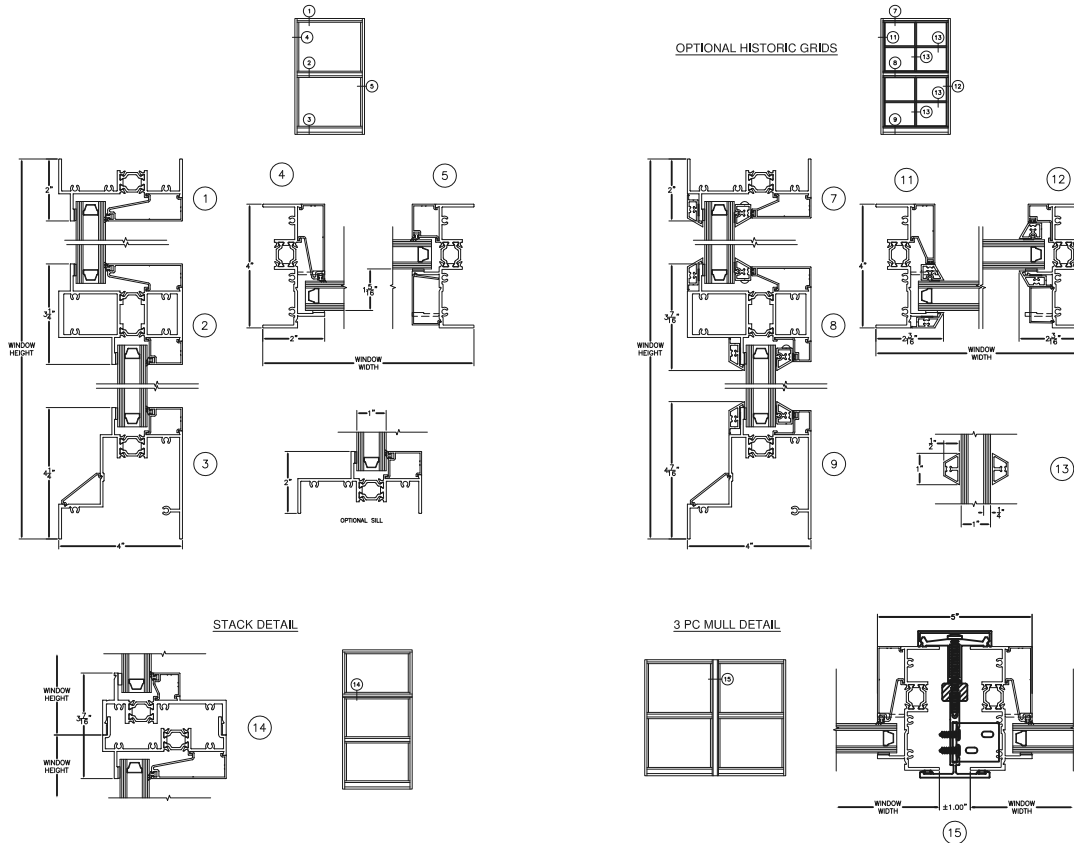
OPTIONS

- Impact Wind Zone 4, Level D, ASTM E 1886/1996 DP +100/-100 (48 X 96)
- Mullion and stacking options
- Receptor, subsill, and panning closure systems
- Available muntins include: between-the-glass, or interior and exterior applied

ACCESSORIES

- 4" Frame Filler (Strut), 4" Head & Jamb Closures (Strut), 4" Subsills (Strut),
- 4" Vertical Mullions, Exterior Applied Grids, Head & Jamb Closure Extenders,
- Interior Trim & Clip, Panning Trim, Stool Covers, Subsill Extenders

Elite 4000 Offset Fixed Frame (4" Frame Depth)



PERFORMANCE

AAMA/WDMA/CSA 101/I.S.2/A440-08

AW-PG80-FW – 60" X 99"

AW-PG120-FW – 48" X 120"

Large Missile Impact: Wind Zone 4: ASTM E 1886/1996

DP 100 PSF – 48" X 96"

Air Infiltration: <.01 CFM/SQ.FT. @ 6.24 PSF per ASTM E293

Water Resistance: 12 PSF per ASTM E 547 & 331

Uniform Deflection:

AW80 - 80 PSF per ASTM E330

AW120 - 120 PSF per ASTM E330

Uniform Structural:

AW80 - 120 psf PER ASTM E330

AW120 - 180 psf PER ASTM E330

Thermal Performance: 1" Insulated Glass (NFRC 100/200)

Low-E U-factor = 0.43

Low-E & argon U-factor = 0.40

Thermal Performance: 1" Insulated Glass per AAMA 1503

Low-E & argon U-factor = 0.39; CRF = 67