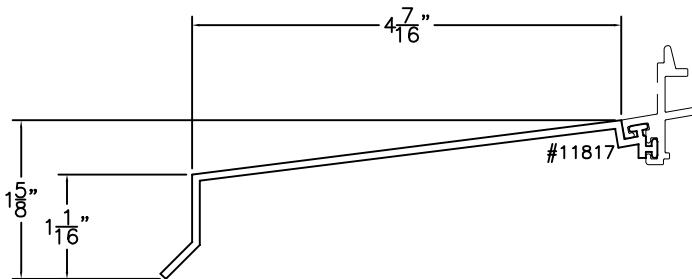
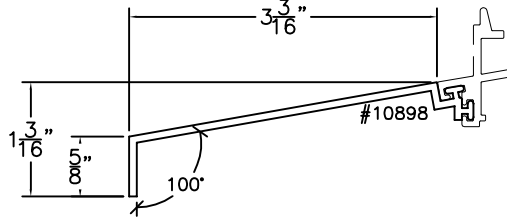
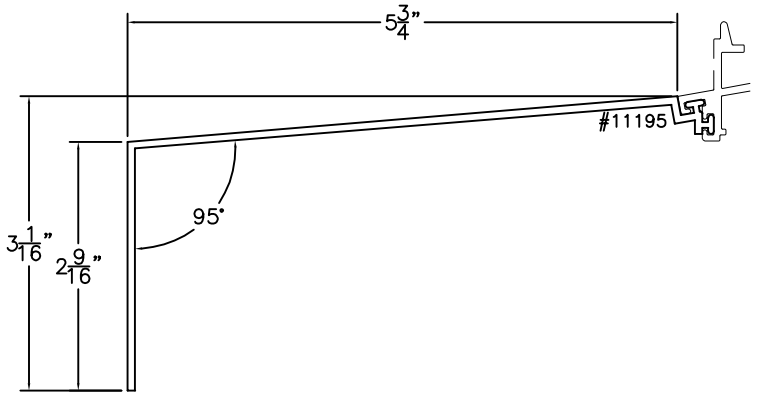
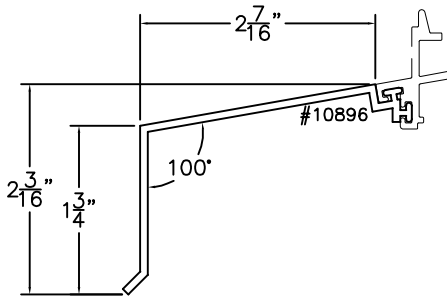
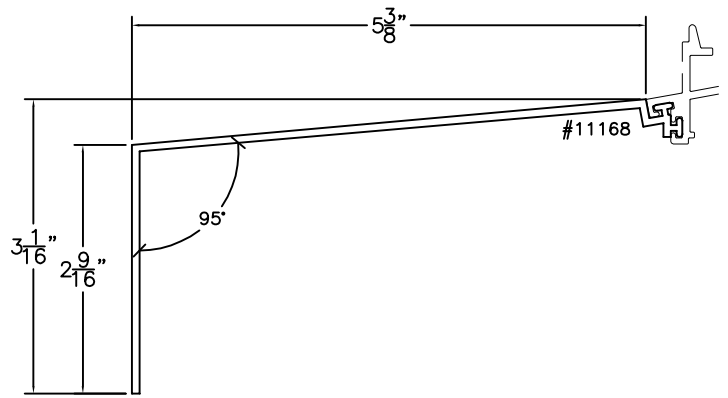
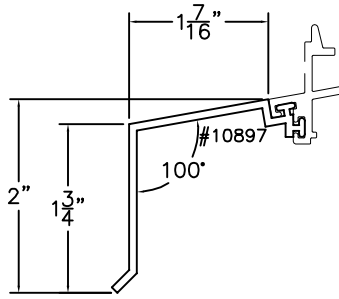


PART NO.	EXTRUSION	MATING COMPONENT	DESCRIPTION	SHEET
E10897	10897	MULTIPLE	1 $\frac{7}{16}$ " X 2" SUBSILL EXTENDER	1 OF 1
E.10896	10896		2 $\frac{7}{16}$ " X 2 $\frac{3}{16}$ " SUBSILL EXTENDER	1 OF 1
E.10898	10898		3 $\frac{3}{16}$ " X 1 $\frac{3}{16}$ " SUBSILL EXTENDER	1 OF 1
E.11817	11817		4 $\frac{7}{16}$ " X 1 $\frac{5}{8}$ " SUBSILL EXTENDER	1 OF 1
E.11168	11168		5 $\frac{3}{8}$ " X 3 $\frac{1}{16}$ " SUBSILL EXTENDER	1 OF 1
E.11195	11195		5 $\frac{3}{4}$ " X 3 $\frac{1}{16}$ " SUBSILL EXTENDER	1 OF 1



<p>1293 N. Harvey Mitchell Pkwy. Phone: (979) 823-6557 Fax: (979) 823-1005</p>	IMPACT:	NO	COMPATIBLE SERIES:	FAMILY:	ACC	SCALE:	1:2	REVISION:	A	SHEET NUMBER
	BLAST:	NO	2000	DESCRIPTION:  SUBSILL EXTENDERS  <small>THIS DRAWING CONTAINS CONFIDENTIAL INFORMATION WHICH IS THE PROPERTY OF ALL SEASONS. RECEIPT OR POSSESSION OF REPRODUCTIONS OF THIS DRAWING OR POSSESSION OF REPRODUCTIONS OF THIS DRAWING DOES NOT CONFER ANY RIGHTS OR LICENSE TO USE INFORMATION CONTAINED HEREIN WITHOUT THE WRITTEN CONSENT OF ALL SEASONS.</small>						
	TDI NO:		2700							
	FLORIDA NO:		3000							
			5062							
			ELITE							
DRAWN BY:		T.Jobb		DATE DRAWN:		2/5/14		SHEET SIZE:		A

1 OF 1