

**NEW**

## 3250 Single Hung 3 1/4" Frame Depth

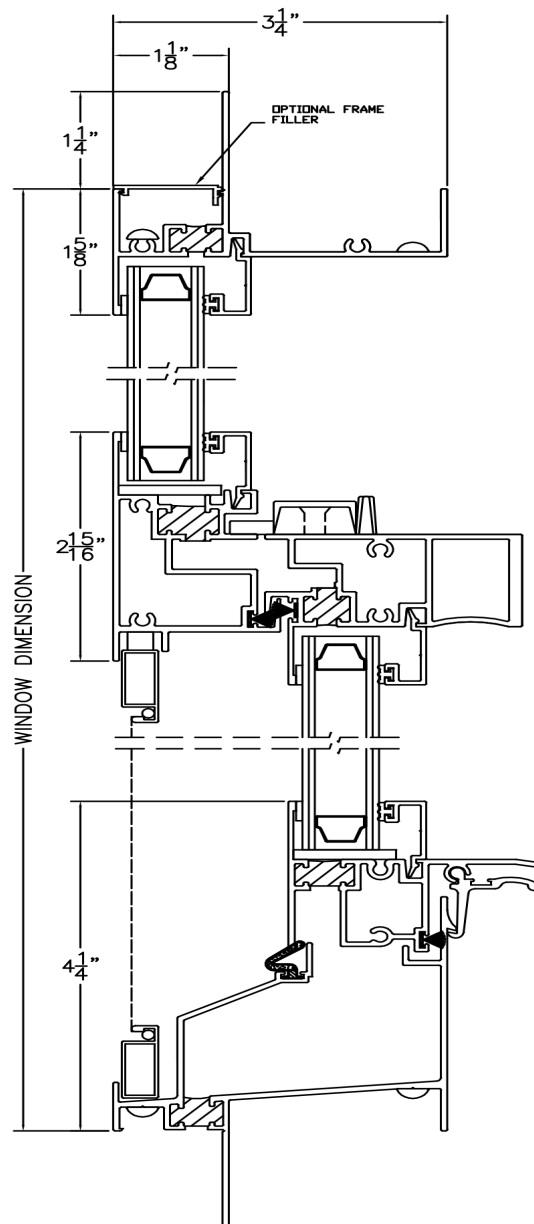
### Features

#### Standard

- High Performance with CW75 rating
- 1" insulated glass, IGCC-CBA rated, tested, and approved
- Thermally broken frame and sash using PIP technology
- Frame and sash factory sealed to ensure weather tightness
- Bead glazed for ease of glass replacement

#### Optional

- Available muntins between-the-glass
- 3/4" insulated glass
- Extruded nail fin, front flange, equal leg
- Mullion and stacking options
- Receptor, subsill, and panning closure systems



1-800-444-1444

[www.asawmfg.com](http://www.asawmfg.com)

[info@asawmfg.com](mailto:info@asawmfg.com)

All Seasons Architectural Windows  
1293 N. Harvey Mitchell Parkway  
Bryan, Texas 77803